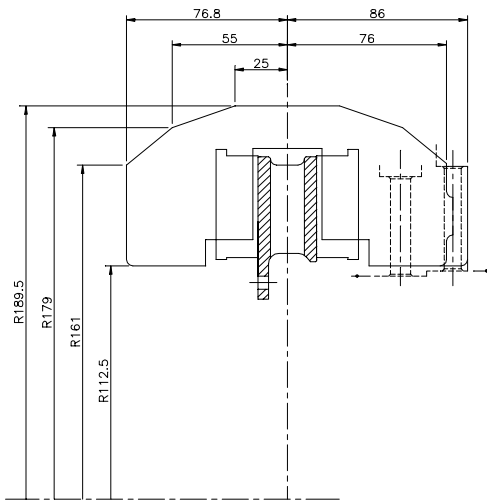
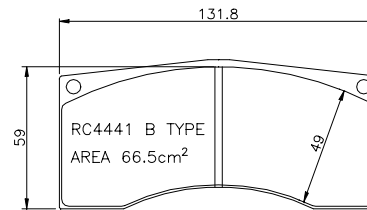


TRANS AM MB4 Caliper

radial profile

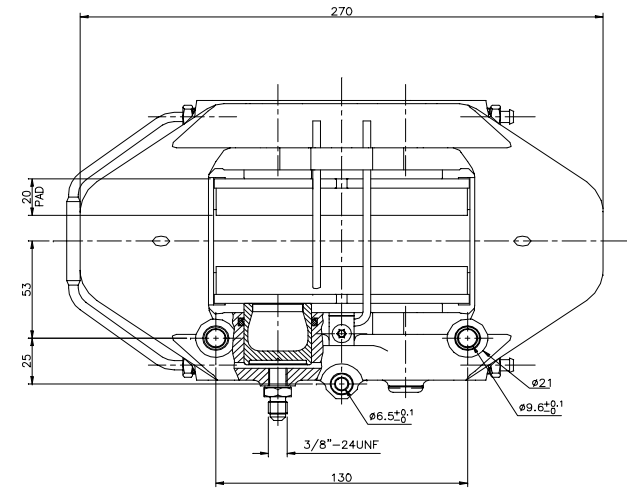


pad shape

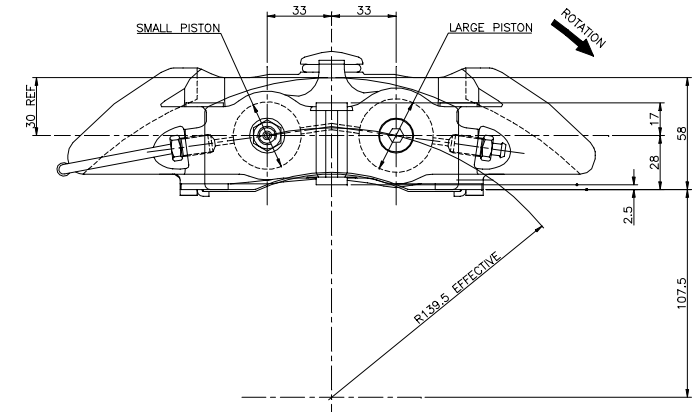


FERODO FRP302
 PAGID U1607
 PFC 7700.**.20.4

plan view



side view



CAR8247E04DSRL	RIGHT LEADING				
CAR8247E04DSL	LEFT LEADING	ø34.9	ø38.1	ø330x28	
CAR8247E04DSRT	RIGHT TRAILING				
CAR8247E04DSL	LEFT TRAILING				
CALIPER PART No	HAND	SMALL PISTON	LARGE PISTON	DISC SIZE	REMARKS

Service parts

1.500" piston assy	PAA4493X661	1.500" drilled insert	ISP3805X400
1.500" AI piston only	PAH3829X400	1.500" canted spring	SCS4493X838
1.500" piston seal	SES3800X751	1.375" drilled insert	ISP3505X400
1.375" piston assy	PAA4493X660	1.375" canted spring	SCS4493X635
1.375" AI piston only	PAH3529X400	bleed screw	FSB0080X008
1.375" piston seal	SES3500X751	caliper temp. strips	THS0080X285
bridge pipe	PSC4489X667		

Alcon Components USA Inc.
 T +1 (847) 788 0901
 F +1 (847) 788 0947
 E pstubbs@alconusa.com

Alcon Indianapolis
 T +1 (317) 244 2142
 F +1 (317) 243 8905
 E info@northamericanraceparts.com



TRANS AM MB4 Caliper

options

- 180mm or 130mm mount pattern

Features and benefits

- Four piston staggered bore design for better pedal feel and reduced pad taper.
- Machined from billet aircraft aluminum alloy for superior strength at high temperatures.
- Mono-block construction for increased caliper stiffness.
- Large pad area and volume for maximum braking performance and pad life.
- Ventilated piston inserts to reduce heat transfer through the brake fluid.



specifications

Piston size	1.500" / 1.375"
Pad area	156cm ² / 24 in ²
Pad volume	312cm ³ / 19in ³
Pad thickness	20mm / .787"
Standard rotor 13.0 x 1.10 / 48 vane	16.40 lbs.
MB4 rear caliper	5.62 lbs.

applications

SCCA Pro Trans Am Series rear caliper